



# **DEBOUT SUR LE ZINC CHANTE VIAN**

## **Hospitality & Technical rider**

Update october 10th 2023

-PAGES 2-4 : GENERAL RIDER - HOSPITALITY

-PAGE 5 : TECHNICAL RIDER / BACKLINE / SOUND

-PAGE 6 : STAGE PLOT + PATCH

-PAGE 7-8 : TECHNICAL RIDER / LIGHT + DECO + LIGHT PLOT

-PAGE 9 : CONTACTS

This document contains all of the information you may need, generalities, hospitality & catering requirements, technical rider, stage plot & input list. In case of any doubt, hesitations or problems, please contact us enough in advance so we can try to work out a solution. If we don't hear from you in advance, you are supposed to provide the full rider as requested without any changes.

# **GENERAL RIDER - HOSPITALITY**

## **TOURING PARTY**

**10** people travelling :

- 6 artists
- 1 manager
- 1 sound FOH
- 1 sound MONITORS
- 1 light operator

## **LOCAL CREW**

To assist our travel-party, we need a local crew available from our arrival until our departure from the venue :

- 1 house manager
- 1 person in charge of artist hospitality, dressing-rooms, transfers.
- 2 light tech
- 2 sound tech
- 2 stage hands

## **TRANSPORT - ACCES – PARKING**

In case of travelling by rail/air, we will require ground transportation for 10 persons + equipment and luggages. Please provide 2 x 9 seats van with enough space for 20 cases.

## **ACCOMODATION**

Please provide 10 singles rooms in a hotel (3 stars\*\*\* minimum) close to the venue or train station/airport if we leave the day after. The booking must include breakfasts for all the team.

## **MEALS**

In the case we arrive on site before 2.00 pm please provide hot lunch for 10 people.

Please provide hot diner at the venue or in a restaurant nearby the venue.

Lunch and diner have to be composed with choices of different starters + main course with side dish + cheeses + desert, including red and white wines. rouges et blancs. Home made, local and organic products are preferred. Please avoid industrial and junk food.

**1 doesn't eat shellfish/crustaceans and meat except chicken (fish is ok)**

**1 doesn't eat shellfish/crustaceans especially shrimp ( !! strong allergie !!)**

# **RIDER GENERAL – HOSPITALITE**

## **DRESSING-ROOMS**

Please provide 2 spacious clean and lockable dressing rooms comfortable for 10 people. Upon arrival the keys will be handed to the tour manager. All dressing rooms should be equipped with 1 fan, tables, sofa, running water, mirrors, fridge, trash can, box of tissues, WIFI Internet access with the network + password, power strip/ multi-socket and toilet.

All the dressing rooms have to be ready before our get-in time.

Please provide in the dressing rooms :

- 10 hangers and rails
  - 8 small towels (black color preferred), which will be used for the stage.
  - different cheeses, salads and deli tray with pickles, butter and fresh bread.
  - fresh fruits (bananas, clementines, apples...)
  - nuts, almonds, hazelnuts
  - chocolate dark 70 %
  - coffee, tea, leamon
- drinks (in a fridge) : 18 craft beers (local preferred), 1 bottle of good white wine, 2 bottles of good red wine, 2L of fresh fruit juice 100 %, 1,5l Coca-Cola sugar free, 3 x 50cl energy drinks (Isostar, Powerade, Red Bull).

In order to reduce plastic waste, we have our own bottles. Thanks for providing water dispensers for us to fill our bottles and no plastic bottles please.

## **PASS**

Please provide 10 All Access pass handed to the tour manager.

## **COMPLEMENTARY TICKETS**

Please provide 15 complimentary tickets for the sole use of our touring party.

## **SCHEDULE**

Here are the timing to plan the day of the show :

- **load-in + set-up + soundcheck : 4H**
- **show : 1H30**

**The show can not start after 09.30 pm.**

# **RIDER GENERAL - HOSPITALITE**

## **RECORDING / PHOTO / MEDIA / INTERVIEW**

No photo, audio or video recording would be allowed without producer agreement. For any request please contact at least one week before the show Eric GHENASSIA – [eric@ghenassia.org](mailto:eric@ghenassia.org) / 06 12 59 33 10.

No last minute requests please.

## **INSURANCE**

Promoter agrees to provide public liability insurance and shall indemnify in case of any personal injury or property damage, brought by or on behalf of any party in connection with the engagement.

## **MISCELLANEOUS**

Thanks to send the following information as soon as possible :

- Technical rider of the venue (stage, sound, light, etc...)
- Production sheet with schedules, contacts, hotel, and every information needed.

# TECHNICAL RIDER

The stage, sound, light and backline systems shall be set before our arrival. The local crew should be available upon our arrival.

The performance area should be a minimum of 10m x 6m.

## BACKLINE

We need you to provide the following :

- Professional drum Pearl, Yamaha... Kick + SN + FT + MEDIUM TOM + 2 crash + 1 ride Zildjian Avedis + Charley + throne + stands + SPD stand + carpet + tambourin + SPD-SX
- Double bass 3/4
- Fender Jaguar bass
- Amp Hot Rod Deluxe + 1 blues Deluxe or 2 Hot Rod Deluxe
- Bass 4x10 ampeg
- Derbouka
- Cajon
- Microkorg + stand RTX
- Ukulele électro acoustic
- Guitare nylon electro acoustic
- Guitare Folk Electroacoustic
- Amp violin AER
- Trombone ténor
- Euphonium Si b
- Guitares stands type RTX x 9
- Clarinette Stand

## SOUND

Please provide a professional quality, stereo four-way speaker system capable of delivering 102 db distortion-free, evenly distributed throughout the venue, plus full range front fills and delay systems where needed. All control of sound system's processors should be available at front of house position. A person responsible for controlling the sound system will be present at all times.

DEBOUT SUR LE ZINC travel with :

- monitor desk (A&H CDM48 with controller)
- In-ears monitors system
- HF microphones

DEBOUT SUR LE ZINC needs you to provide :

- 1 Yamaha QL5 or CL5 desk in FOH
- 1 RIO 32
- 1 RJ45 cat 6 cable between FOH and MON
- 1 wedge (1 channel) for the bass player
- 1 mini-jack stéréo câble to 2 XLR male adapter
- 13 tall and 8 small mics stands
- mics (see patch below)
- power on stage and all the cable necessary for power distribution and patch (xlr...)

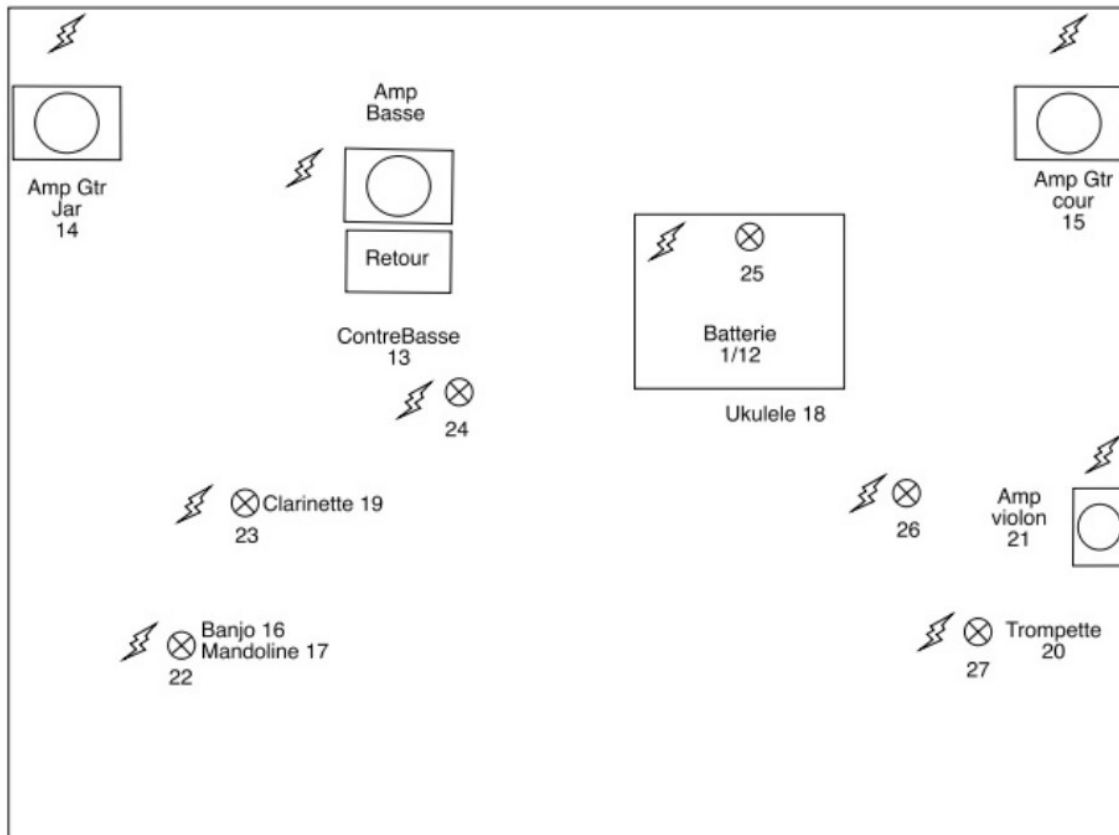
# TECHNICAL RIDER

## PATCH

	Instrument	Micro	Pied de Micro
1	Kick	B52	Petit
2	Snare Top	SM57	Petit
3	Snare Bottom	C 535	Petit
4	Hi-Hat	C 451	Petit
5	Tom 1	E604	
6	Tom 2	E604	
7	OH Jardin	C 451	Grand
8	OH Cour	C 451	Grand
9	Click	DI	
10	SPD 1	DI	
11	SPD 2	DI	
12	Glockenspiel	C 535	Petit
13	Contrebasse	DI	
14	Amp Gtr Jardin	E906	Petit
15	Amp Gtr Cour	E906	Petit

	Instrument	Micro	Pied de Micro
16	Banjo	DI	
17	Mandoline	DI	
18	Ukulele	DI	
19	Clarinette	HF	Fourni
20	Trompette	HF	Fourni
21	Amp Violon	E906	Petit
22	Voix 1	Beta 58	Grand
23	Voix 2	HF	Fourni
24	Voix 3	Beta 58	Grand
25	Voix 4	Beta 56	Grand
26	Voix 5	HF	Fourni
27	Voix 6	HF	Fourni
28	Ambiance Jardin	C 451	Grand
29	Ambiance Cour	C 451	Grand

## STAGE PLOT



# TECHNICAL RIDER

## LIGHT

**Contact : nikola.carton@gmail.com - +336 77 96 49 89**

- Light desk : we use D-light and a computer we will bring

Thanks for providing the following :

1 Robert Julia 1kW 614 or 714  
8 PAR 64 CP62 : including 4 on floor bases  
2 Par 64 CP61 : 2 (added on the floor pipe left and right)  
24 PC 1 or 2kw clear lens  
filters : LF 151, 201, 228

1 smoke machine

## LIGHT PLOT : following page

## STAGE / DECO :

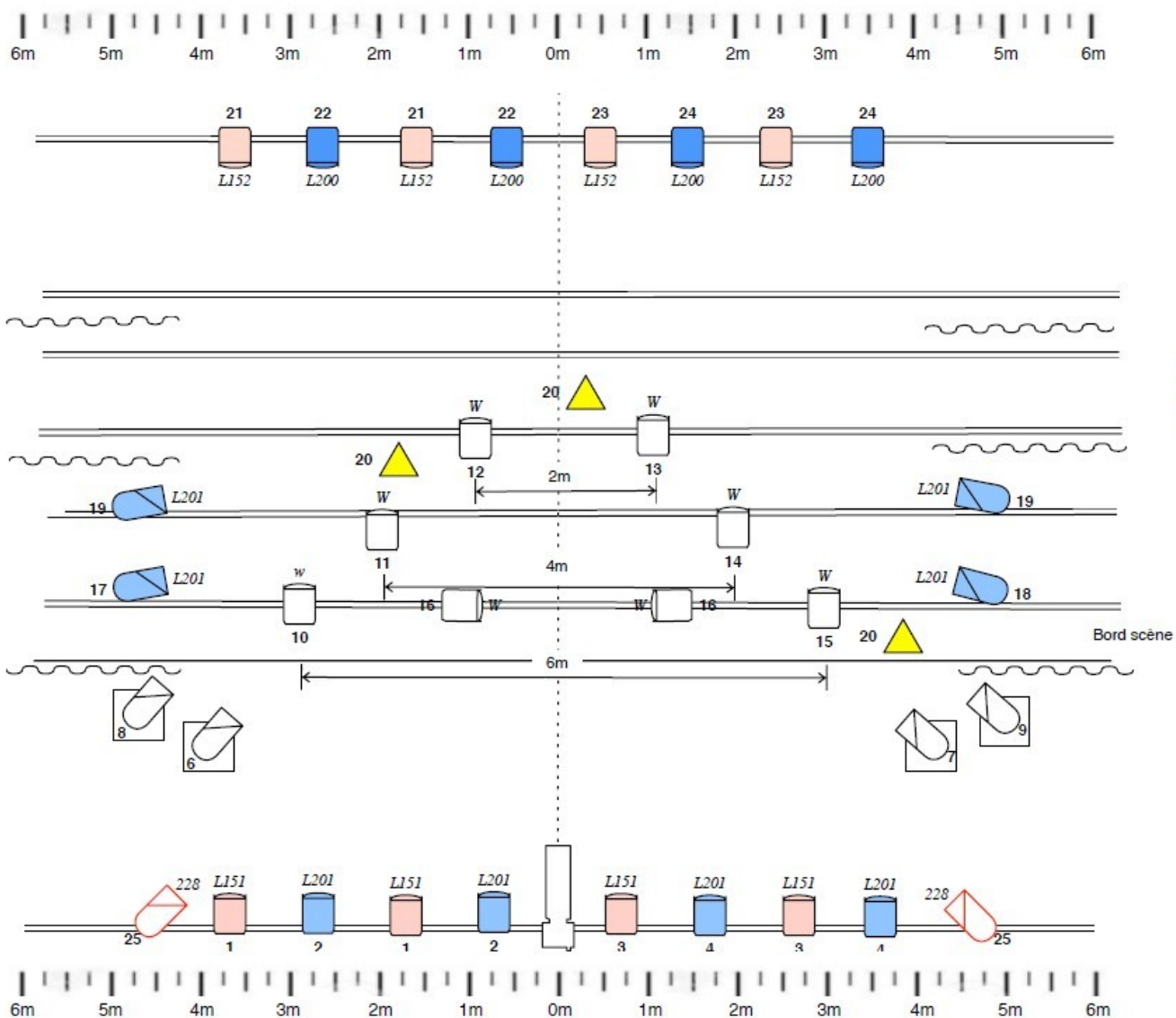
We need you to provide 3 floor lamps + lampshades like in the pictures here.

And 4 carpets like you can see in this video here.

# DSLZ CHANTE VIAN

JARDIN

COUR



lampadaire (fournis) 
 PC 1KW lentille claire 
 Découpe 613 SX ou 713 SX en fonction de la distance

Pars 64 CP62 Platines 
 Pars 64 CP62 
 25 228 Pars 64 CP61



# CONTACTS

- **Sound MON** : Christophe GERARD  
khrys\_tof@yahoo.fr - +336 82 57 96 24

- **Sound FOH** : CHORIZO  
chorizopaijes@gmail.com - +336 60 98 53 13

- **Light** : Nikola CARTON  
nikola.carton@gmail.com - +336 77 96 49 89

- **Management** : Eric GHENASSIA  
eric@ghenassia.org - +336 12 59 33 10